



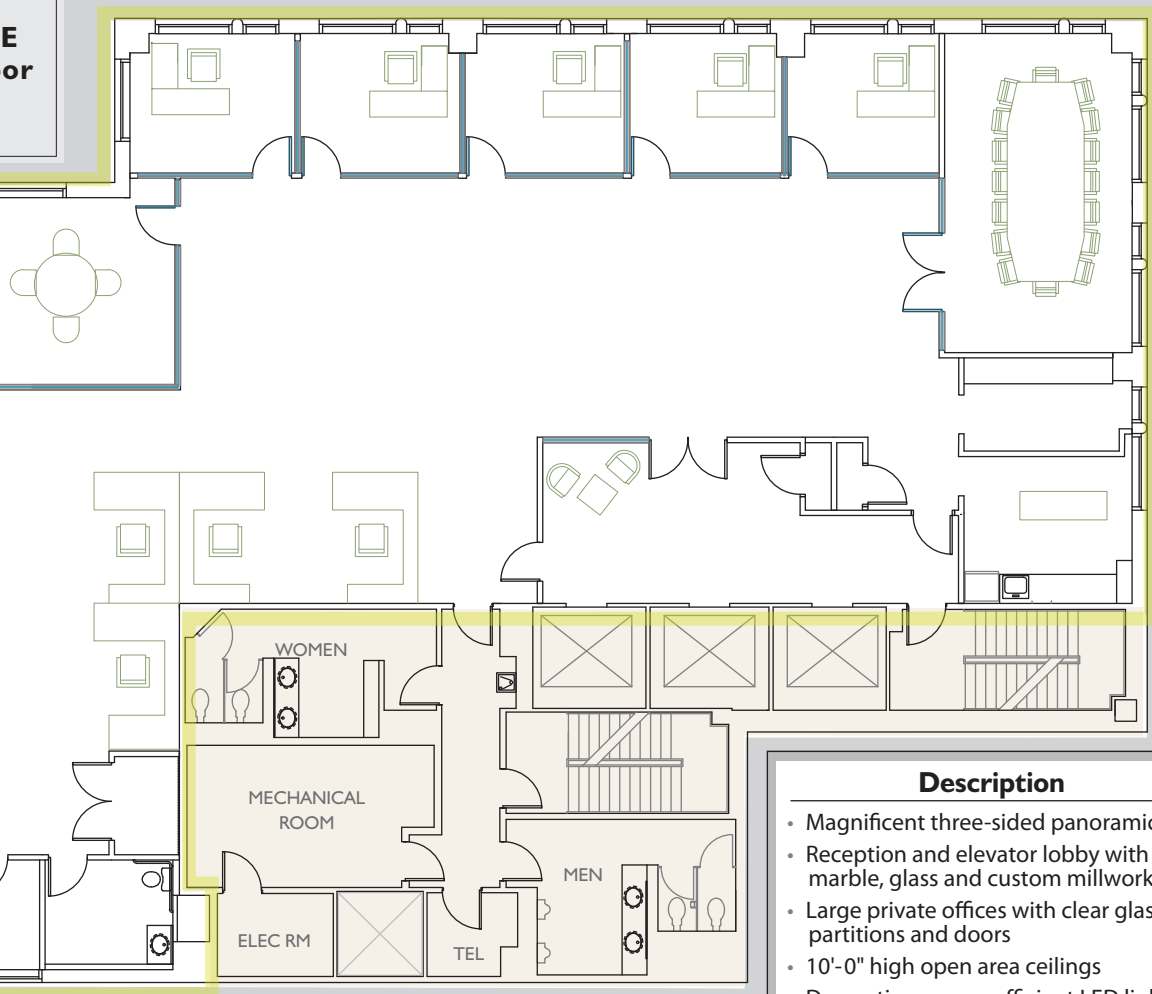
**667**

# Tower Floor 21st Floor

**8,460 RSF  
TOWER SUITE  
on the 21st Floor**  
Immediately  
Available

61ST STREET

MADISON AVENUE



The furniture layout  
is for position only.

## Description

- Magnificent three-sided panoramic views
- Reception and elevator lobby with Italian marble, glass and custom millwork
- Large private offices with clear glass partitions and doors
- 10'-0" high open area ceilings
- Decorative energy efficient LED lighting throughout
- Stylish pantry with stone-top buffet serving area and high-end built-in appliances
- Private marble ADA accessible bathroom
- Wireless electronic window blinds
- Pre-built mailroom with premium millwork cabinets and counter space
- Premier broadloom carpeting throughout
- Cat 6 wiring/ample power
- Golf simulator room
- In-house fitness club

For further information and inspection,  
please contact:

Samia Bali: 212.308.3336 • samia.bali@hartzmountain.com

**The Hartz Group, Inc.**

667 Madison Avenue, New York, New York 10065  
212.308.3336 - Phone • 212.838.8845 - Fax • [www.667madison.com](http://www.667madison.com)