

Last Mile Industrial Warehouse

Move Your Business **closer** to the Port of NY & NJ

600 Jefferson Avenue, Secaucus, NJ

TOTAL: **338,661 SF**

Lease Price: **\$25.00 psf NET**

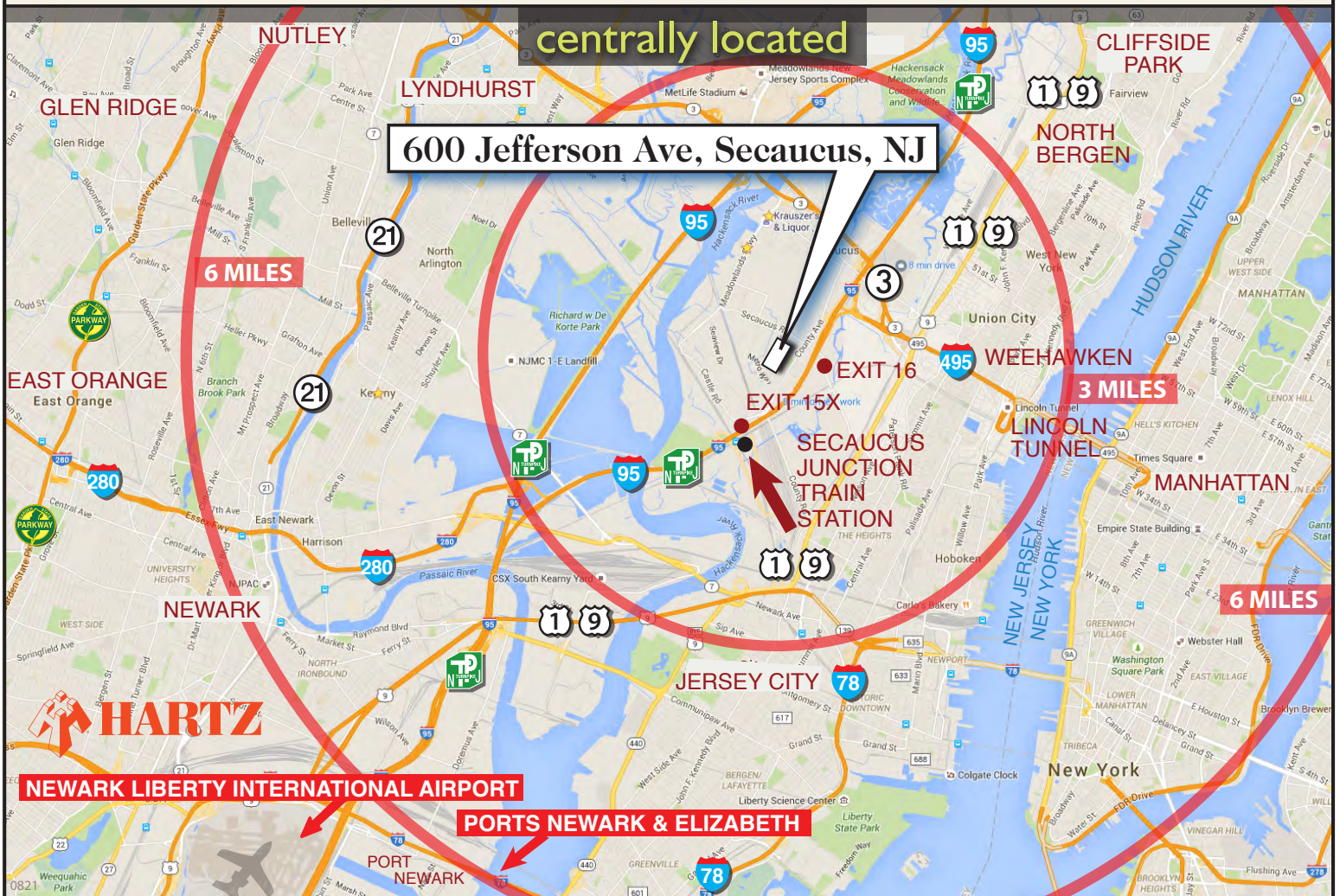


Warehouse Available: JAN 1, 2022

- 338,661 SF** Total Available
- 211,612 SF** High Bay Warehouse – 32' clear ceiling ht
- 54,754 SF** Mezzanine Warehouse
- 58,765 SF** Under Warehouse Mezzanine – 19'-5" clear
- 8,530 SF** Mezzanine Office
- 5,000 SF** First Floor Office

- Mezzanine Floor Load: 125 lbs/psf
- Under Mezzanine Floor Load: 400 lbs/psf
- Warehouse Floor Load: 500-650 lbs/psf
- Fifty-one (51) Loading Docks
- ESFR Sprinkler System

Comments: Industrial building located directly off NJ Turnpike at Exit 15X. 2-1/2 miles to the Lincoln Tunnel. The building is within minutes of the Ports, Newark Liberty International Airport and Teterboro Airport. The Garden State Parkway, Routes 17, 46, and arteries to I-80 are easily accessible.



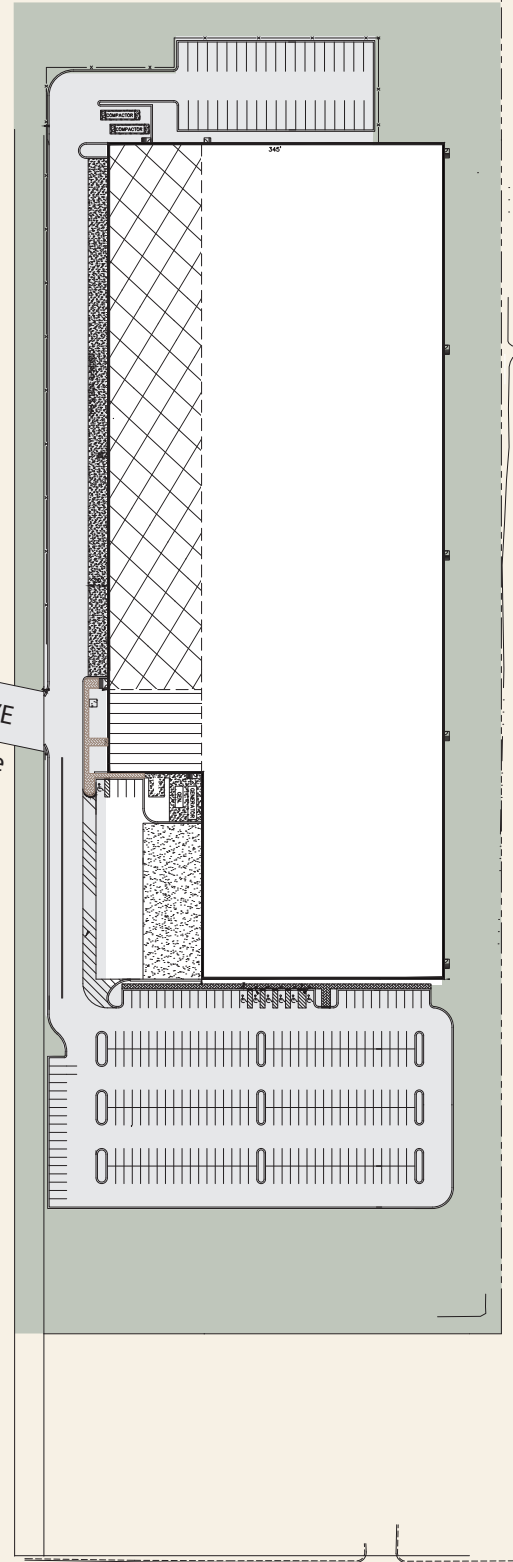
Last Mile Industrial Warehouse

Move Your Business **closer** to the Port of NY & NJ

600 Jefferson Avenue, Secaucus, NJ

TOTAL: **338,661 SF**

Warehouse Available: JAN 1, 2022



JEFFERSON AVE
← NJ Turnpike



SECAUCUS ROAD

For leasing information, please contact:

Charlie Reese • 201-272-5202
charlie.reese@hartzmountain.com

Rick Vanderbeck • 201-272-5223
rick.vanderbeck@hartzmountain.com

Stephen Benoit • 201-272-5214
stephen.benoit@hartzmountain.com

Last Mile Industrial Warehouse

Move Your Business **closer** to the Port of NY & NJ

600 Jefferson Avenue, Secaucus, NJ

TOTAL: **338,661 SF**

Warehouse Available: JAN 1, 2022



For leasing information, please contact:

Charlie Reese • 201-272-5202
charlie.reese@hartzmountain.com

Rick Vanderbeck • 201-272-5223
rick.vanderbeck@hartzmountain.com

Stephen Benoit • 201-272-5214
stephen.benoit@hartzmountain.com