

# Industrial Warehouse Space Available

Move Your Business to **Northern NJ**

20-30 & 25 Continental Drive, Wayne, New Jersey

Warehouse Space: **Immediately Available**

**192,997 SF**



- Floor Load (Warehouse): 250 lbs psf
- Ceiling Height: 18'-4" – 24'-0" +/-

- Column Spacing: 40'-0" x 39'-6"

- Loading Docks: Sixty-one (61) Exterior Doors

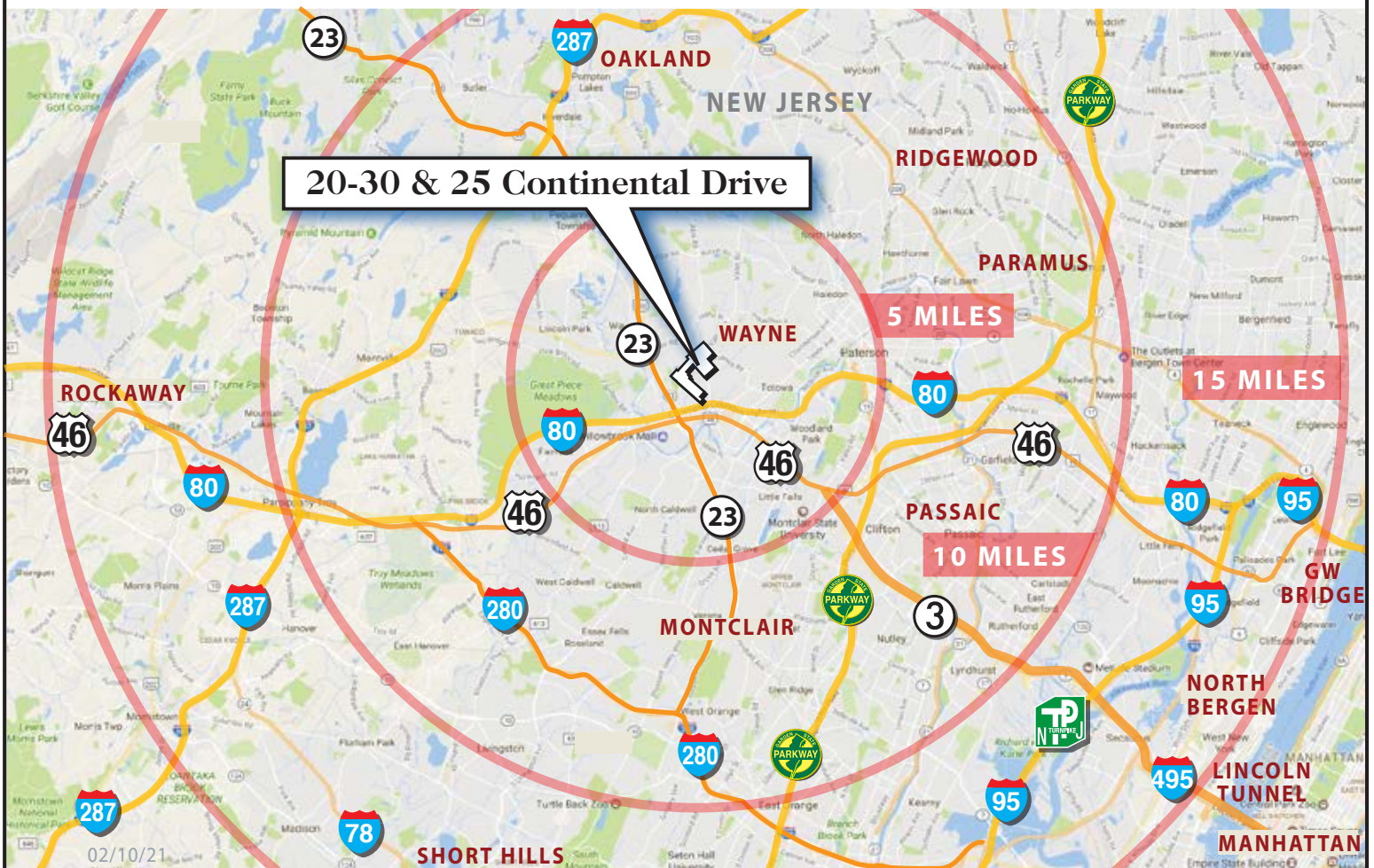
### Comments:

- Excellent warehouse location within close proximity to Interstate 80 & Route 23. The Garden State Parkway, Routes 17, 46, 287 and 10 are easily accessible.

### Economic Incentives:

- The New Jersey Economic Development Authority (EDA) offers a multitude of incentive programs.

Visit [www.njeda.com](http://www.njeda.com) for more info.



# Industrial Warehouse Space Available

Move Your Business to **Northern NJ**

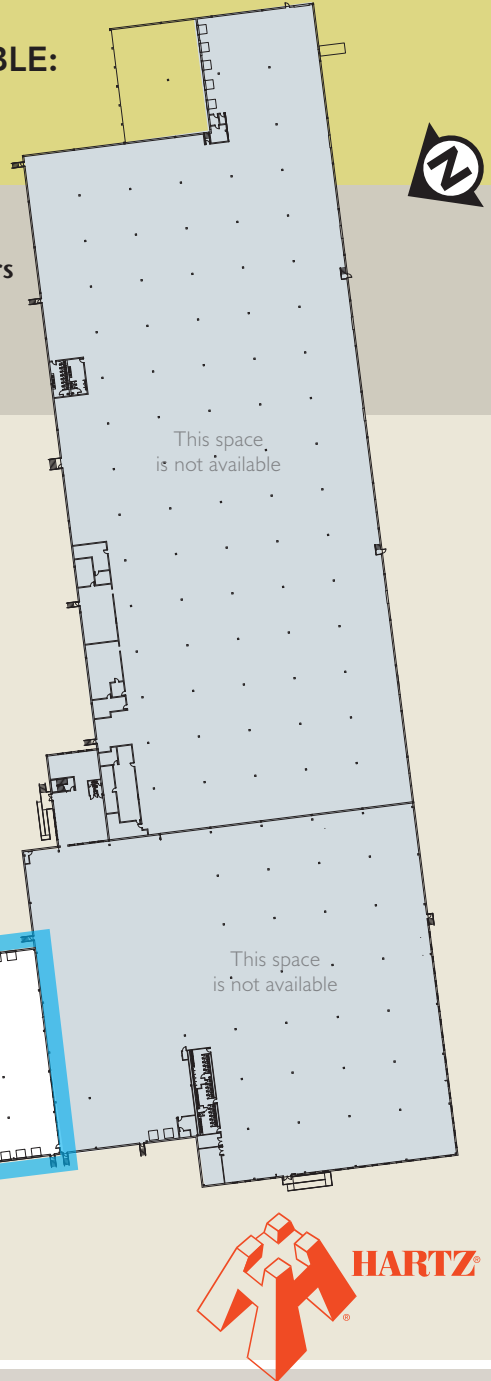
20-30 & 25 Continental Drive,  
Wayne, New Jersey



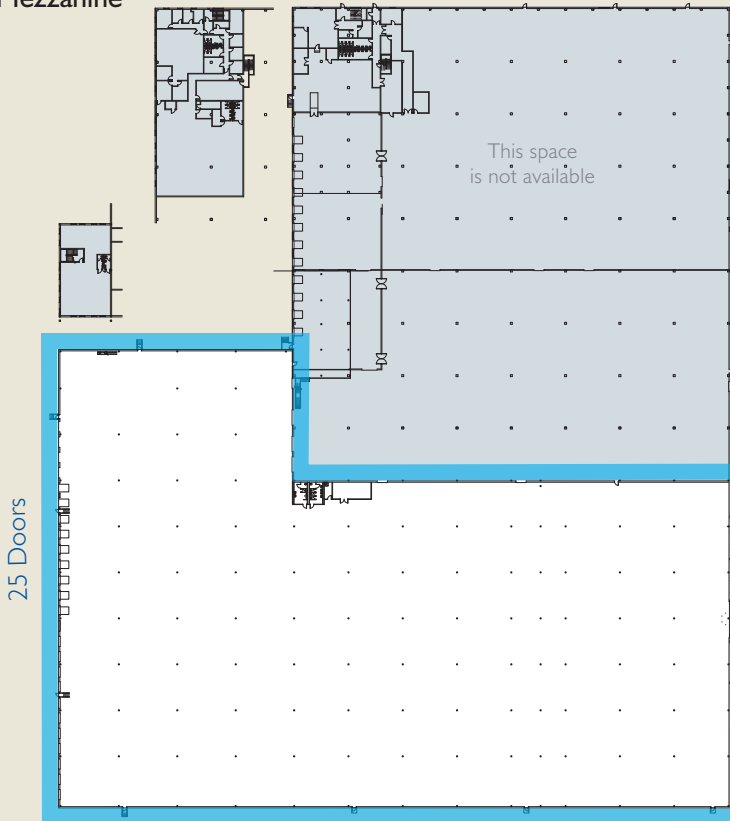
-  20-30 Continental Drive
-  25 Continental Drive

TOTAL SPACE AVAILABLE:  
**192,997 SF**

- **Loading Docks:**  
Sixty-one (61) Exterior Doors



Mezzanine



01/27/21



For leasing information, please contact:

**Charlie Reese** • 201-272-5202  
[charlie.reese@hartzmountain.com](mailto:charlie.reese@hartzmountain.com)

**Rick Vanderbeck** • 201-272-5223  
[rick.vanderbeck@hartzmountain.com](mailto:rick.vanderbeck@hartzmountain.com)

**Stephen Benoit** • 201-272-5214  
[stephen.benoit@hartzmountain.com](mailto:stephen.benoit@hartzmountain.com)