

1200 HARBOR BLVD
Weehawken, New Jersey



4TH FLOOR PLAN

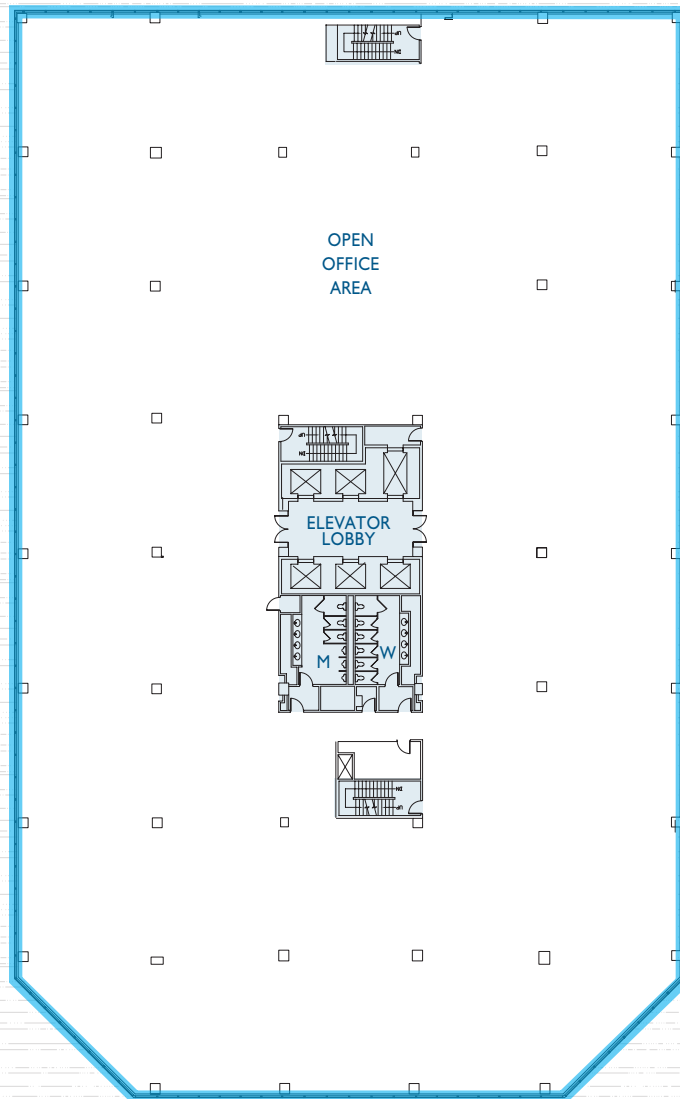
43,663 SF

Terms Upon Request



1000 & 1200 HARBOR BLVD

43,663 SF
AVAILABLE



4th
FLOOR

Space Available:

Third Floor: 34,104 SF
Fourth Floor: 43,663 SF
Eighth Floor: 34,420 SF & 13,956 SF
Ninth Floor: 23,780 SF & 11,560 SF
Tenth Floor: 23,270 SF & 4,742 SF
Total: 189,495 SF

Rental Upon Request

Possession: Immediate

Term: 5 years minimum

Structure: Steel Frame

Exterior: Insulated glass curtain wall in thermal break system

Floor-to-Floor Heights:
13'-9"

Clear Ceiling Heights:
9'-0"

Floor Load: 100 LBS PSF

HVAC: Cooling tower, chiller, hot water baseboard, heat exchangers, VAV.

Fire Protection: Fully sprinklered, manual pull stations to activate voice evacuation system, automatic smoke alarm.

Elevators: Five (5) Passenger
One (1) Freight

Fiber: Multiple fiber providers are available, including Optimum, Verizon and ATT.

Electrical: Primary service 13.2 KV from PSE&G.

VIEWS OF
MANHATTAN

VIEW OF THE
GEORGE
WASHINGTON
BRIDGE

A Hartz Mountain Property

For further information or to schedule an inspection contact:

Charlie Reese • 201-272-5202
charlie.reese@hartzmountain.com

Rick Vanderbeck • 201-272-5223
rick.vanderbeck@hartzmountain.com

Stephen Benoit • 201-272-5214
stephen.benoit@hartzmountain.com

