

**1200 HARBOR BLVD**  
Weehawken, New Jersey



**4TH FLOOR PLAN**

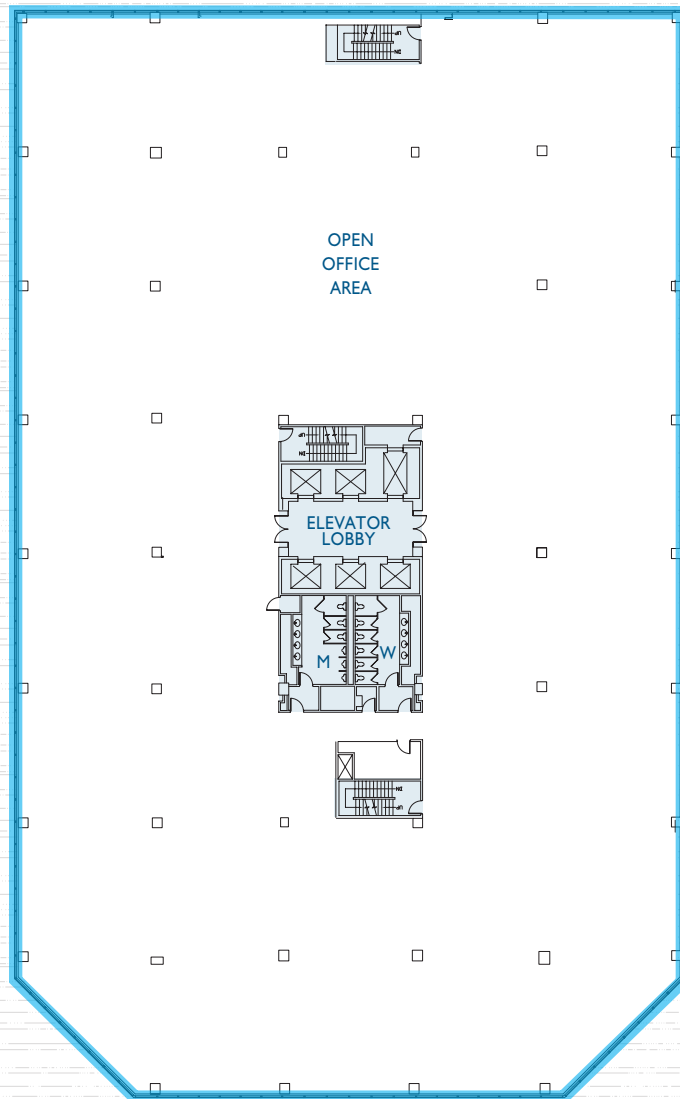
**43,663 SF**

Terms Upon Request



1000 & 1200 HARBOR BLVD

**43,663 SF**  
AVAILABLE



**4th FLOOR**

**Space Available:**

- Third Floor: 34,104 SF
- Fourth Floor: 43,663 SF
- Eighth Floor: 34,420 SF & 13,956 SF
- Ninth Floor: 23,780 SF & 11,560 SF
- Tenth Floor: 23,270 SF & 4,742 SF
- Total: 189,495 SF

**Rental** Upon Request

**Possession:** Immediate

**Term:** 5 years minimum

**Structure:** Steel Frame

**Exterior:** Insulated glass curtain wall in thermal break system

**Floor-to-Floor Heights:**  
13'-9"

**Clear Ceiling Heights:**  
9'-0"

**Floor Load:** 100 LBS PSF

**HVAC:** Cooling tower, chiller, hot water baseboard, heat exchangers, VAV.

**Fire Protection:** Fully sprinklered, manual pull stations to activate voice evacuation system, automatic smoke alarm.

**Elevators:** Five (5) Passenger  
One (1) Freight

**Fiber:** Multiple fiber providers are available, including Optimum, Verizon and ATT.

**Electrical:** Primary service 13.2 KV from PSE&G.

VIEWS OF  
MANHATTAN

VIEW OF THE  
GEORGE  
WASHINGTON  
BRIDGE

A Hartz Mountain Property

*For further information or to schedule an inspection contact:*

**Ernie Christoph** • 201-272-5201  
[ernie.christoph@hartzmountain.com](mailto:ernie.christoph@hartzmountain.com)

**Charlie Reese** • 201-272-5202  
[charlie.reese@hartzmountain.com](mailto:charlie.reese@hartzmountain.com)

**Rick Vanderbeck** • 201-272-5223  
[rick.vanderbeck@hartzmountain.com](mailto:rick.vanderbeck@hartzmountain.com)

