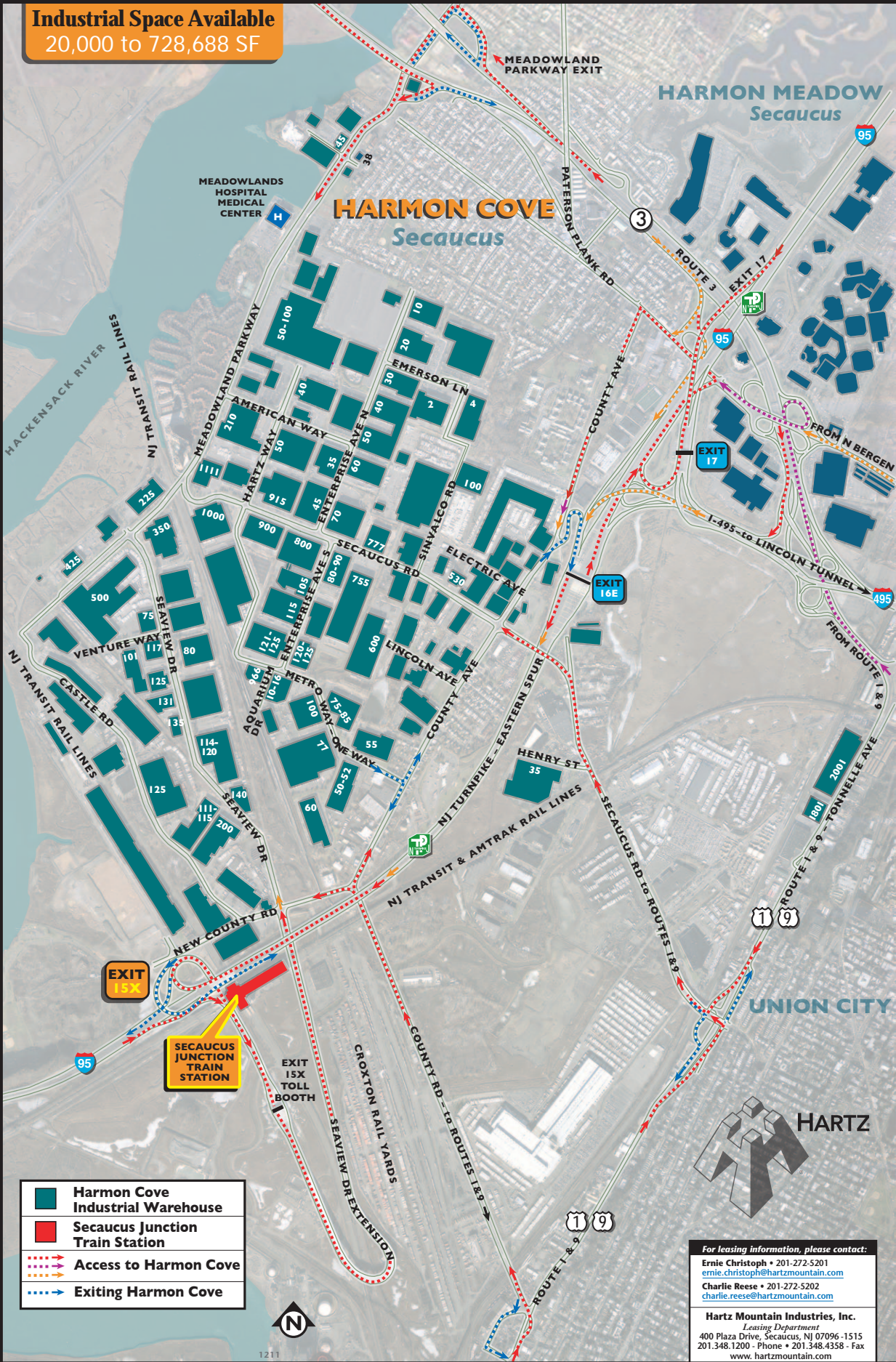


Move Your Business **closer** to the Port of NY & NJ

**HARMON COVE** - direct access to **Exit 15X**

**Industrial Space Available**  
20,000 to 728,688 SF



	Harmon Cove Industrial Warehouse
	Secaucus Junction Train Station
	Access to Harmon Cove
	Exiting Harmon Cove



For leasing information, please contact:  
**Ernie Christoph** • 201-272-5201  
[ernie.christoph@hartzmountain.com](mailto:ernie.christoph@hartzmountain.com)  
**Charlie Reese** • 201-272-5202  
[charlie.reese@hartzmountain.com](mailto:charlie.reese@hartzmountain.com)  
**Hartz Mountain Industries, Inc.**  
 Leasing Department  
 400 Plaza Drive, Secaucus, NJ 07096-1515  
 201.348.1200 - Phone • 201.348.4358 - Fax  
[www.hartzmountain.com](http://www.hartzmountain.com)

