



153 HALSEY STREET

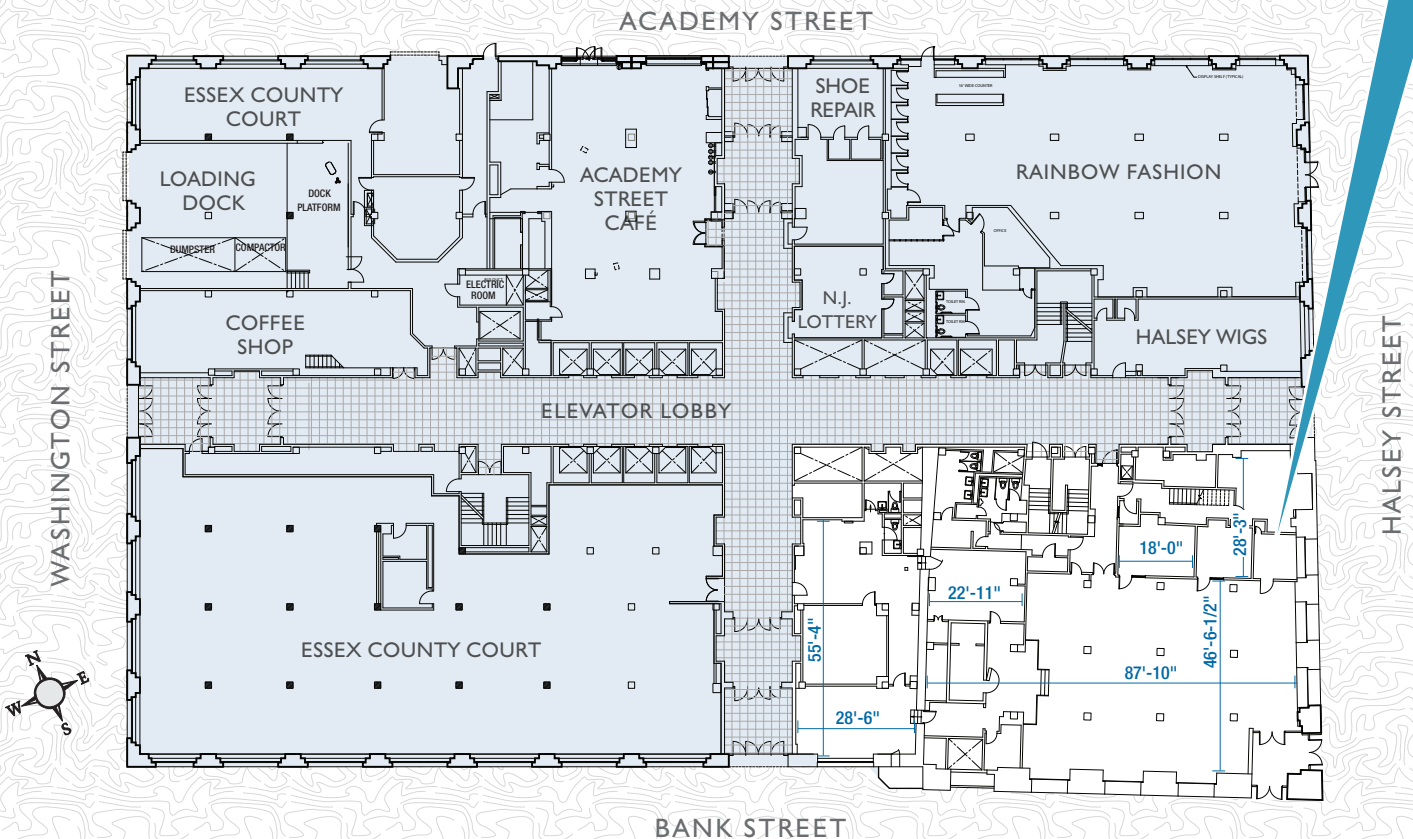
Newark, New Jersey

“One of Newark’s most outstanding commercial buildings”

Newark Preservation and Landmarks Committee

- Conveniently located in the heart of Newark’s revitalized business district, 153 Halsey Street offers 8,143 square feet of street level office / retail space and two office units on the 8th floor, 21,135 SF and 5,180 for lease in this landmark building.
- The building is located within close proximity of the Prudential Headquarters, six colleges that provide for a skilled work force, educational activities, cultural events, conference facilities and services for business.

8,143 SF of OFFICE SPACE AVAILABLE – GROUND FLOOR



0321

For leasing information, please contact:

Charlie Reese • 201-272-5202
charlie.reese@hartzmountain.com

Rick Vanderbeck • 201-272-5223
rick.vanderbeck@hartzmountain.com

Stephen Benoit • 201-272-5214
stephen.benoit@hartzmountain.com

Hartz Mountain Industries, Inc. • Leasing Department • Phone: 201.348.1200 • Fax: 201.348.4358 • www.hartzmountain.com