

Industrial Warehouse
Space Available

Move Your Business **closer** to the Port of NY & NJ

114-120 Seaview Drive, Secaucus, New Jersey

69,982 SF

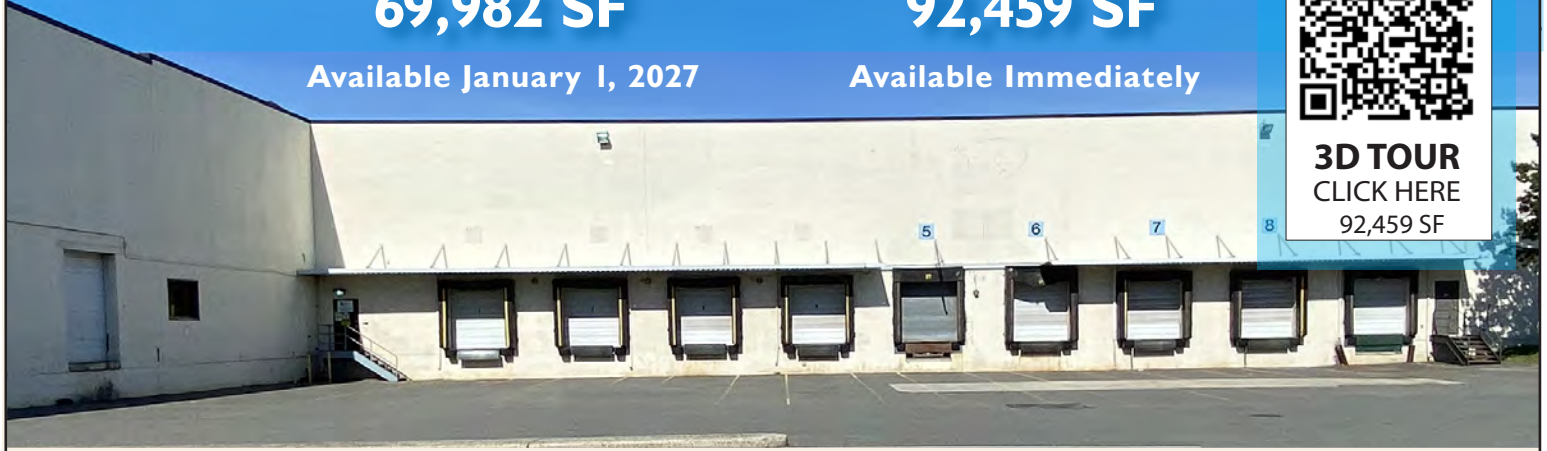
92,459 SF

Available January 1, 2027

Available Immediately



3D TOUR
CLICK HERE
92,459 SF



• Floor Load (Warehouse):
250 lbs psf

• Column Spacing: 45' x 40'
• Ceiling Height: 24'

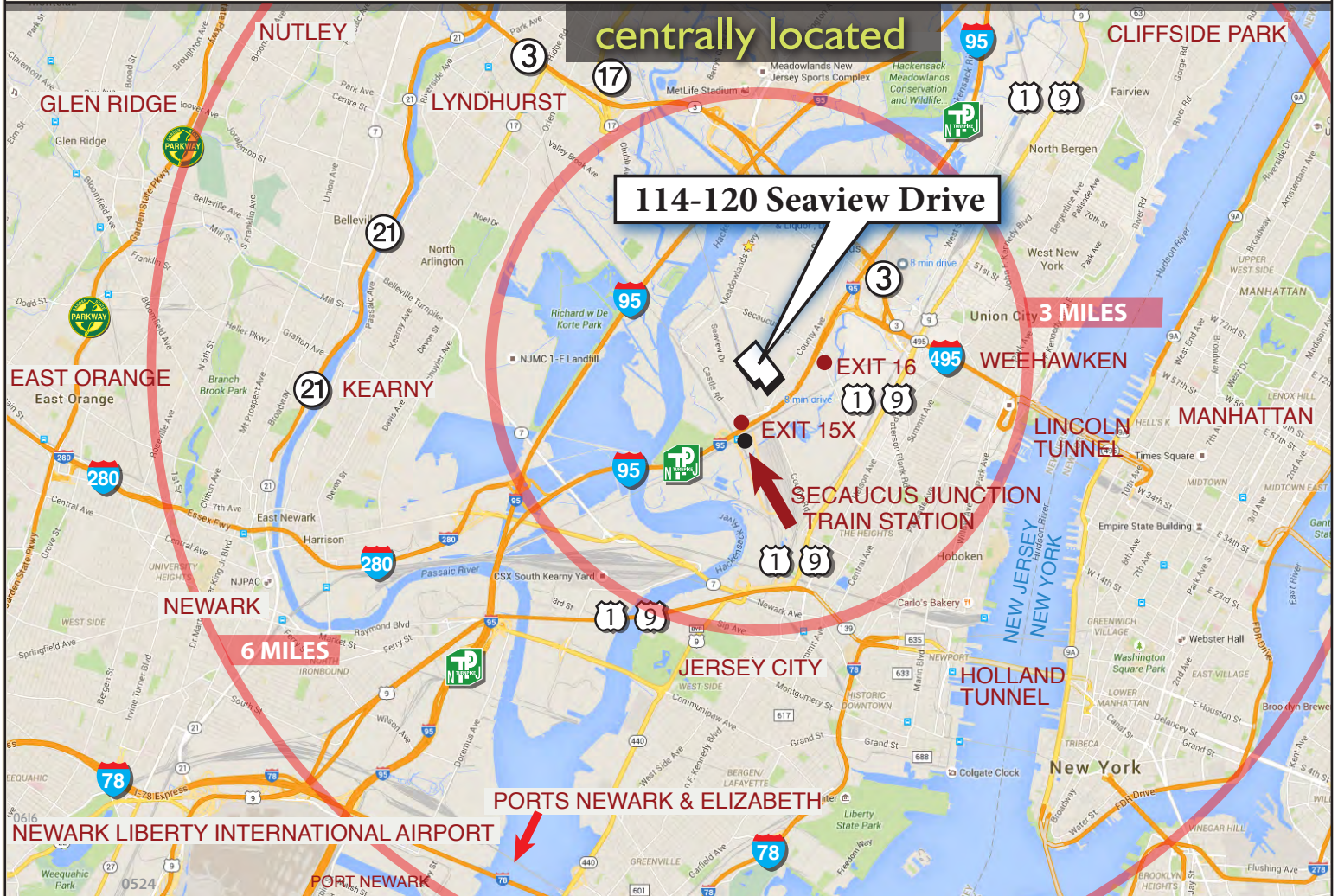
Comments:

- Industrial building located directly off NJ Turnpike at Exit 15X. 2-1/2 miles to the Lincoln Tunnel. The building is within minutes of the Ports, Newark Liberty International Airport and Teterboro Airport. The Garden State Parkway, Routes 17, 46, and arteries to I-80 are easily accessible.

Economic Incentives:

- The New Jersey Economic Development Authority (EDA) offers a multitude of incentive programs.

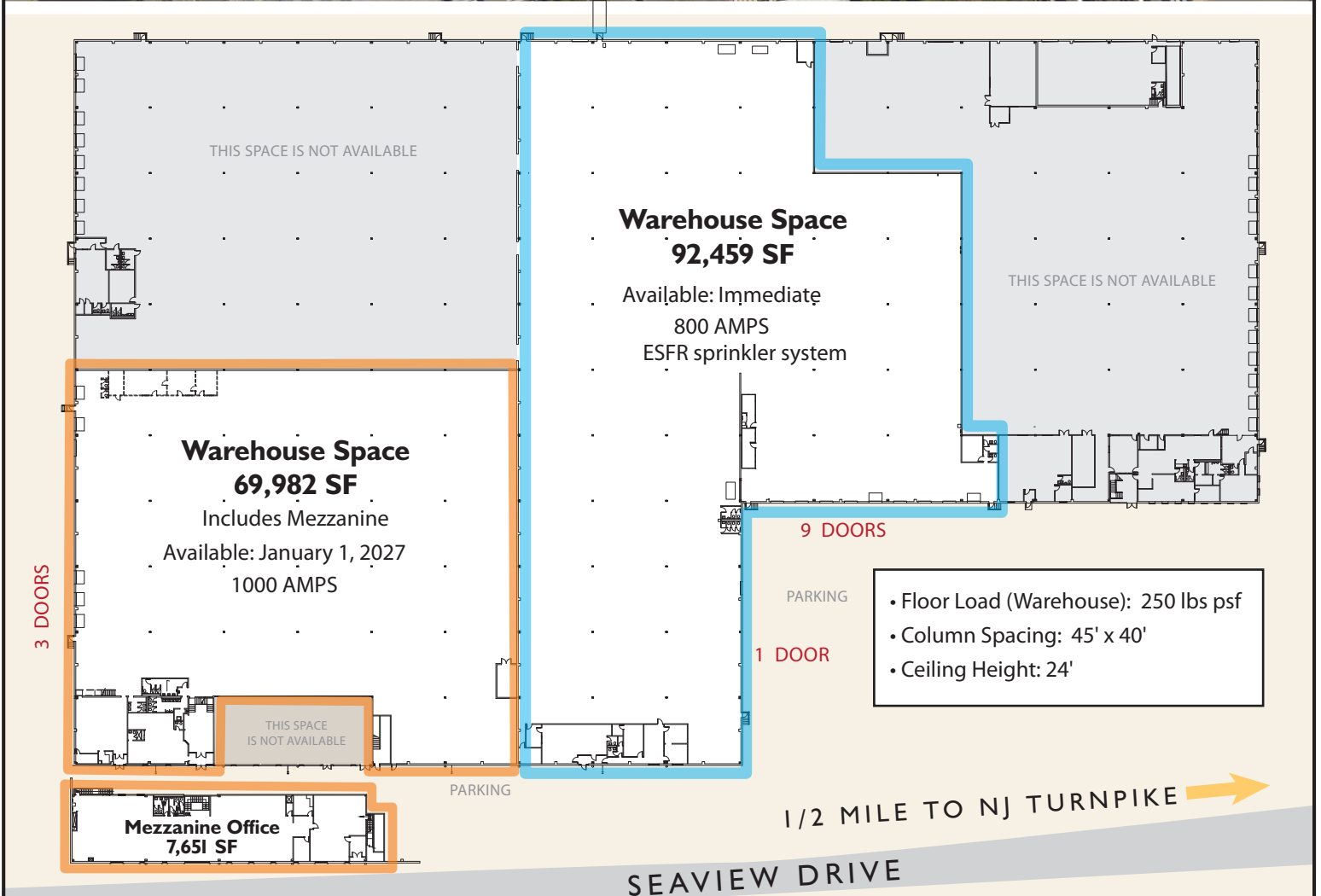
Visit www.njeda.com for more info.



Industrial Warehouse
Space Available

Move Your Business **closer** to the Port of NY & NJ

114-120 Seaview Drive, Secaucus, New Jersey



For leasing information, please contact:



Charlie Reese • 201-272-5202
charlie.reese@hartzmountain.com

Stephen Benoit • 201-272-5214
stephen.benoit@hartzmountain.com