

Industrial Warehouse  
Space Available

Move Your Business **closer** to the Port of NY & NJ

50-52 Metro Way, Secaucus, New Jersey

Warehouse Space Available: Immediate

50,558 SF

Available Immediately  
43,400 SF Warehouse  
3,579 SF Office  
3,579 SF Mezzanine

- Term: 5 years minimum
- 5 Overhead 8' x 8' Doors
- Floor Load (Warehouse): 250 lbs psf

- Ceiling Height: 24'-0"
- Column Spacing: 45'-0" x 48'-6" +/-

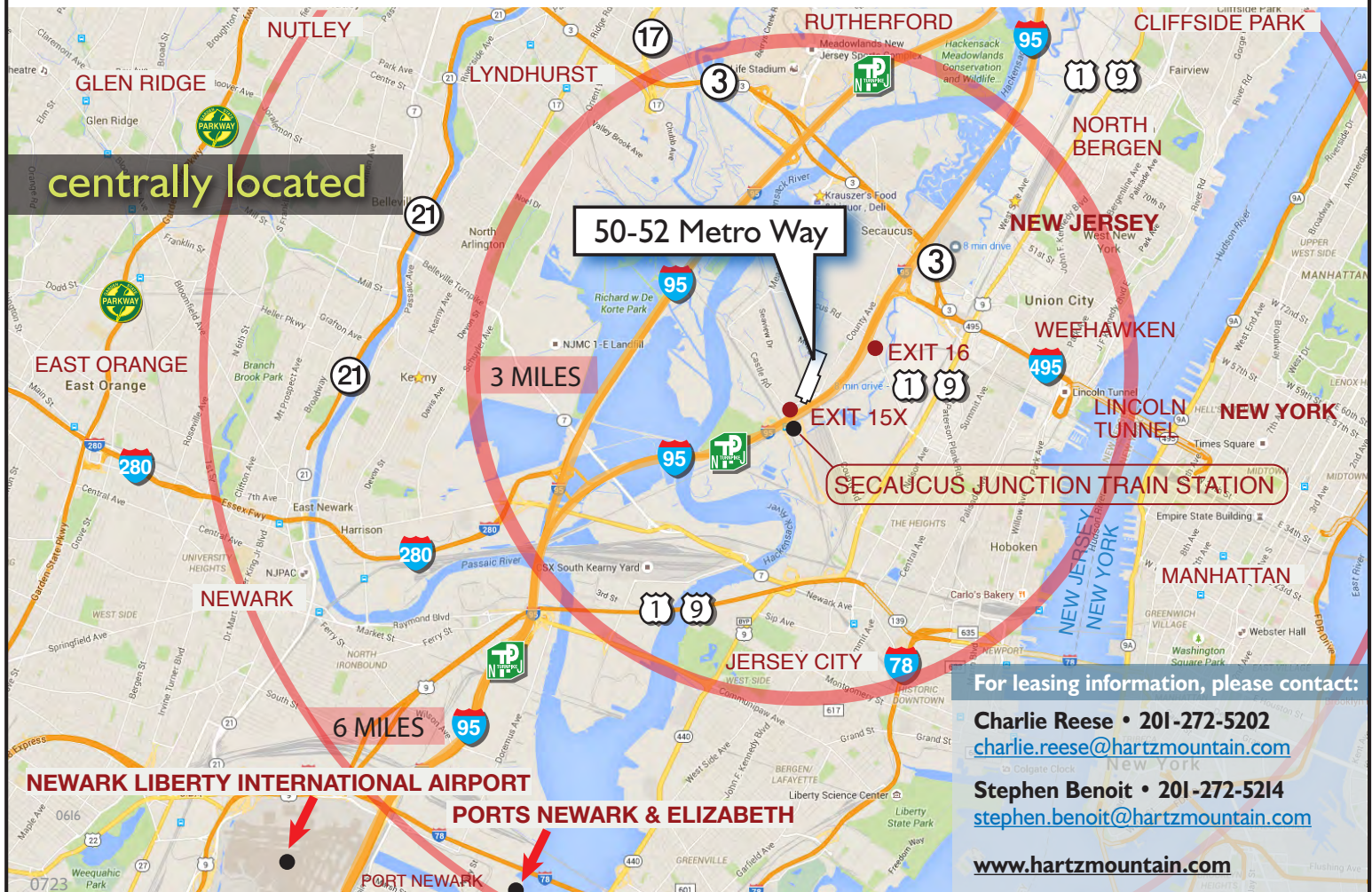
**Comments:**

- Industrial building located directly off NJ Turnpike at Exit 15X. 2-1/2 miles to the Lincoln Tunnel. The building is within minutes of the Ports, Newark International Airport and Teterboro Airport. The Garden State Parkway, Routes 17, 46, and arteries to I-80 are easily accessible.

**Economic Incentives:**

- The New Jersey Economic Development Authority (EDA) offers a multitude of incentive programs.

Visit [www.njeda.com](http://www.njeda.com) for more info.



For leasing information, please contact:

Charlie Reese • 201-272-5202  
[charlie.reese@hartzmountain.com](mailto:charlie.reese@hartzmountain.com)

Stephen Benoit • 201-272-5214  
[stephen.benoit@hartzmountain.com](mailto:stephen.benoit@hartzmountain.com)

[www.hartzmountain.com](http://www.hartzmountain.com)



Industrial Warehouse  
Space Available

Move Your Business **closer** to the Port of NY & NJ

**Warehouse & Office Available: 50,558 SF • 6 miles to the Ports**

**50-52 Metro Way, Secaucus, New Jersey**

**Available Immediately:**

**43,400 SF Warehouse**

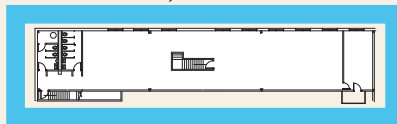
**3,579 SF Office**

**3,579 SF Mezzanine**



Five (5) 8' x 8' Overhead Doors

**MEZZANINE**  
3,579 SF



**OFFICE**  
3,579 SF

**WAREHOUSE**  
43,400 SF

*This space is not available*

*This space is not available*

0723

For leasing information, please contact:



Charlie Reese • 201-272-5202  
[charlie.reese@hartzmountain.com](mailto:charlie.reese@hartzmountain.com)

Stephen Benoit • 201-272-5214  
[stephen.benoit@hartzmountain.com](mailto:stephen.benoit@hartzmountain.com)

Hartz Mountain Industries, Inc. • Leasing Department • Phone: 201.348.1200 • Fax: 201.348.4358 • [www.hartzmountain.com](http://www.hartzmountain.com)