

1200 HARBOR BLVD
Weehawken, New Jersey



10TH FLOOR PLAN



28,012 SF

Terms Upon Request



VIEW OF THE JERSEY PALISADES

Space Available:

Third Floor: 34,104 SF

Fourth Floor: 43,663 SF

Eighth Floor: 34,420 SF & 13,956 SF

Ninth Floor: 23,780 SF & 11,560 SF

Tenth Floor: 23,270 SF & 4,742 SF

Total: 189,495 SF

Rental: Upon Request

Possession: Immediate

Term: 5 years minimum

Structure: Steel Frame

Exterior: Insulated glass curtain wall in thermal break system

Floor-to-Floor Heights: 13'-9"

Clear Ceiling Heights: 9'-0"

Floor Load: 100 LBS PSF

HVAC: Cooling tower, chiller, hot water baseboard, heat exchangers, VAV.

Fire Protection:

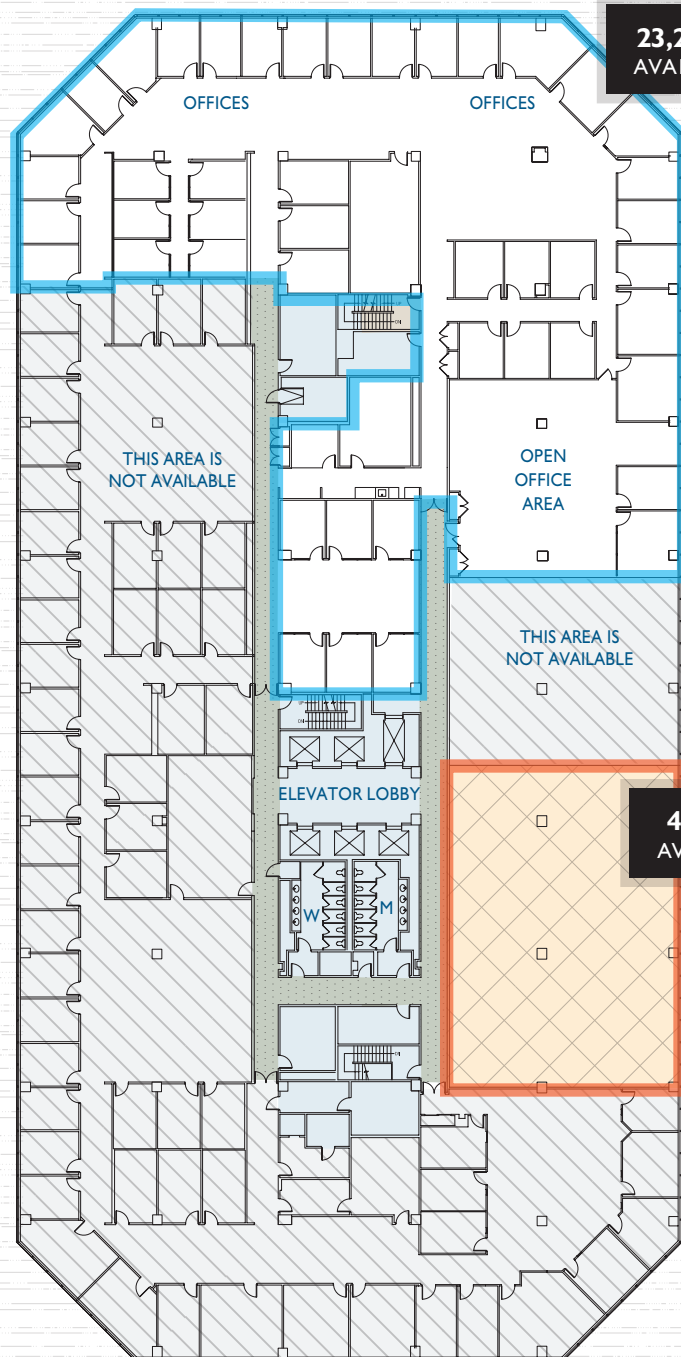
Fully sprinklered, manual pull stations to activate voice evacuation system, automatic smoke alarm.

Elevators: Five (5) Passenger
One (1) Freight

Fiber: Multiple fiber providers are available, including Optimum, Verizon and ATT.

Electrical: Primary service 13.2 KV from PSE&G.

VIEW OF THE PALISADES



**23,270 SF
AVAILABLE**

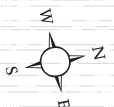
OPEN
OFFICE
AREA

THIS AREA IS
NOT AVAILABLE

ELEVATOR LOBBY

**4,742 SF
AVAILABLE**

**10th
FLOOR**



VIEWS OF
MANHATTAN

HUDSON RIVER

VIEW OF THE
GEORGE
WASHINGTON
BRIDGE

For further information or to schedule an inspection contact:

Charlie Reese • 201-272-5202
charlie.reese@hartzmountain.com

Stephen Benoit • 201-272-5214
stephen.benoit@hartzmountain.com



HARTZ

A Hartz Mountain Property

Hartz Mountain Industries, Inc. • Leasing Department • Phone: 201.348.1200 • Fax: 201.348.4358 • www.hartzmountain.com