

1200 HARBOR BLVD
Weehawken, New Jersey



4TH FLOOR PLAN

43,663 SF

Terms Upon Request



1000 & 1200 HARBOR BLVD

43,663 SF
AVAILABLE

Space Available:

Third Floor: 34,104 SF

Fourth Floor: 43,663 SF

Eighth Floor: 34,420 SF & 13,956 SF

Ninth Floor: 23,780 SF & 11,560 SF

Tenth Floor: 23,270 SF & 4,742 SF

Total: 189,495 SF

Rental: Upon Request

Possession: Immediate

Term: 5 years minimum

Structure: Steel Frame

Exterior: Insulated glass curtain wall in thermal break system

Floor-to-Floor Heights: 13'-9"

Clear Ceiling Heights: 9'-0"

Floor Load: 100 LBS PSF

HVAC: Cooling tower, chiller, hot water baseboard, heat exchangers, VAV.

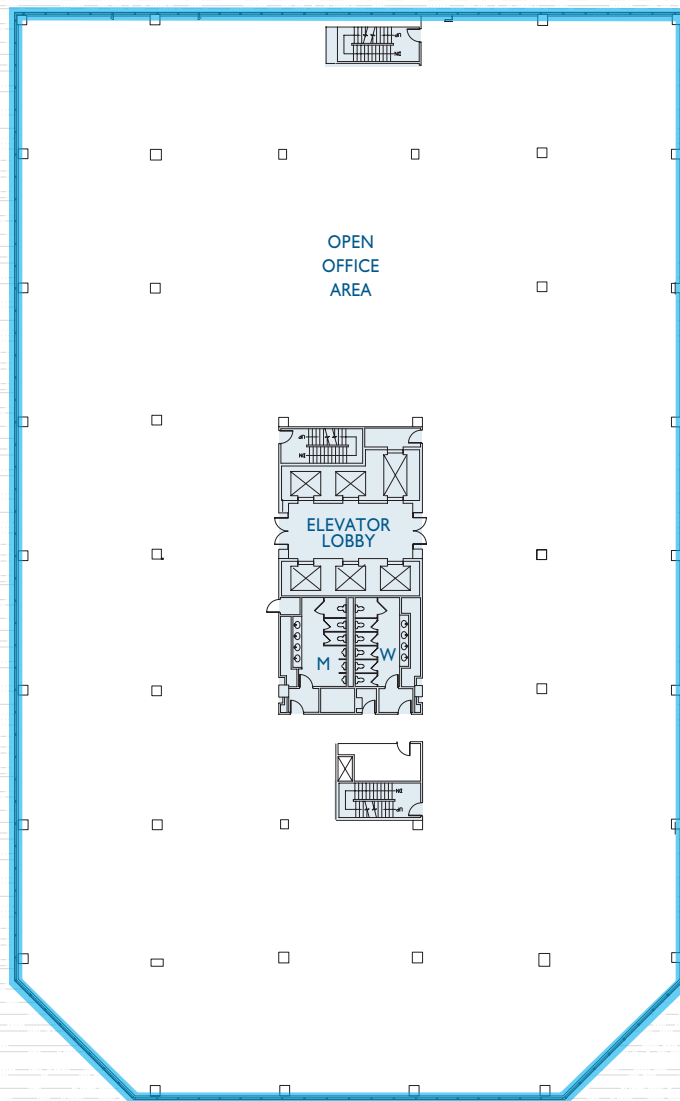
Fire Protection:

Fully sprinklered, manual pull stations to activate voice evacuation system, automatic smoke alarm.

Elevators: Five (5) Passenger
One (1) Freight

Fiber: Multiple fiber providers are available, including Optimum, Verizon and ATT.

Electrical: Primary service 13.2 KV from PSE&G.



**4th
FLOOR**

VIEWS OF
MANHATTAN

VIEWS OF THE
GEORGE
WASHINGTON
BRIDGE

For further information or to schedule an inspection contact:

Charlie Reese • 201-272-5202
charlie.reese@hartzmountain.com

Stephen Benoit • 201-272-5214
stephen.benoit@hartzmountain.com



HARTZ

A Hartz Mountain Property

Hartz Mountain Industries, Inc. • Leasing Department • Phone: 201.348.1200 • Fax: 201.348.4358 • www.hartzmountain.com